



*Starship  
Sydney*



# Congratulations ON YOUR ENGAGEMENT!

**STARSHIP SYDNEY OFFERS A SPARKLING  
HARBOUR BACKDROP TO COMPLEMENT YOUR  
UNFORGETTABLE WEDDING DAY**

Thank you for your enquiry regarding Starship Sydney  
for your forthcoming wedding.

This stunning all glass boat is really something very special.  
Surrounded by 3.5 metre floor to ceiling glass, you and your guests  
experience uninterrupted panoramic 360 degree views from all levels.

Offering formal dining for up to 350 guests and cocktail parties  
for up to 950 guests it also allows complete privacy on your  
wedding day as your reception is the only event on board.





## INSPECTIONS & PRICING

To book a guided inspection with our wedding coordinator or to discuss your upcoming event please contact our office:

*Monday - Friday: 9am - 5pm  
Late Night Thursdays, Saturdays & Sundays  
by appointment*

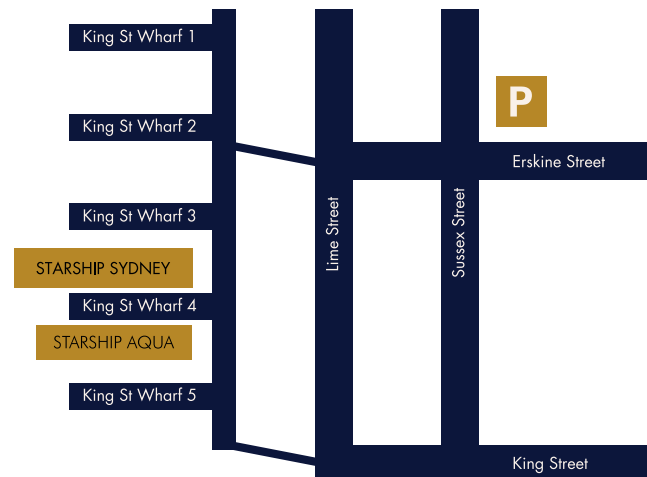
**P:** 02 9279 3433

**E:** [enquiry@starshipsydney.com.au](mailto:enquiry@starshipsydney.com.au)

**W:** [www.starshipsydney.com.au](http://www.starshipsydney.com.au)

**A:** King Street Wharf 4,  
Darling Harbour Sydney NSW

## HOW TO FIND US IN DARLING HARBOUR



## OVERVIEW OF FEATURES

- ✓ **SPACIOUS** - Starship Sydney features three, spacious high ceilinged and expertly planned levels. Including unique features such as a columnless design and free flowing spaces.
- ✓ **STABLE & QUIET** - The latest in nautical engineering used on Starship Sydney - providing unparalleled quiet cruising with remarkable stability.
- ✓ **PRIVATE BRIDAL ROOM** - Ideal for a quiet and private retreat, the spacious room has lounges, flat screen and mini bar (also suitable as a green room).
- ✓ **EXPERIENCED STAFF** - Our well trained professional team has been managing events on Sydney Harbour for nearly 30 years. We are experts in every aspect of every event.
- ✓ **SPECTACULAR VIEWS** - Enjoy 360 degree unobstructed views of the magnificent Sydney Harbour from all levels. All windows are UV glare resistant.
- ✓ **LED TV'S** - The vessel includes multiple flat screen LED TVs and a wireless PA system. Projectors, advanced sound production and more available on request.
- ✓ **AIR CONDITIONED** - Powerful, ducted air conditioning, whisper quiet outlets seamlessly and discreetly integrated into the architecturally designed ceiling, resulting in no visible obtrusions.
- ✓ **COMPLETE PRIVACY** - During your event you will have complete and exclusive use of the vessel. Your privacy is guaranteed.
- ✓ **HYDRAULIC LIFT** - Perfect for product launches and unveilings, the hydraulic floor lift can be used for revealing products up to the size of a car or boat.
- ✓ **STREAMLINED DESIGN** - Starship Sydney has been designed by the highly awarded architect William Smart of SD Studios with a high level of attention to detail.
- ✓ **WHEELCHAIR AND LIMITED MOBILITY FRIENDLY** - Access to Starship Lounge, bathrooms, main dining deck. Special requirements apply, please discuss with event manager prior to event.
- ✓ **MULTIPLE BARS** - Enjoy a beverage from one of the multiple bars spaced throughout the vessel.
- ✓ **BATHROOMS** - For your convenience bathroom facilities are located on 2 levels of the vessel with discreet access at the rear of the vessel.



## Our Wedding Package

Our aim is to make your planning as easy as possible so we have included these items to do just that

- ✓ 5 hours continuous cruising on Sydney Harbour
- ✓ 5 hour beverage package
- ✓ 3 course or buffet menu
- ✓ Canapés on arrival served on the lounge deck
- ✓ Centrepieces & tea lights on each table
- ✓ White linen cloths & napkins with napkin rings
- ✓ Custom made Diamond Chairs
- ✓ White ceiling draping
- ✓ Custom-made white bridal and cake table
- ✓ Complete privacy, exclusivity and access to all levels of the vessel
- ✓ Use of VIP bridal suite
- ✓ Professional reception manager to look after you & your guests
- ✓ Surround sound system & microphone
- ✓ Professional wedding co-coordinator to assist in your planning
- ✓ Placement of name cards & bonbonniere
- ✓ Use of wheelchair lift if required for access up and down stairs



## TOUR OF STARSHIP SYDNEY



## *Main Dining Deck*

**AT 450 SQUARE METRES, STARSHIP SYDNEY HAS THE LARGEST OPEN PLAN DECK SPACE AVAILABLE ON SYDNEY HARBOUR.**

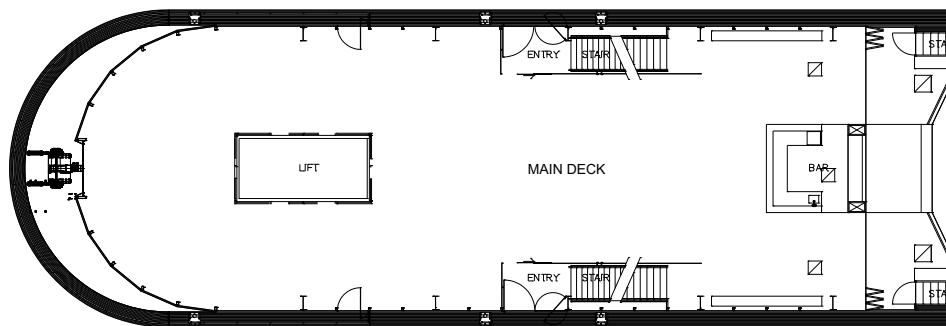
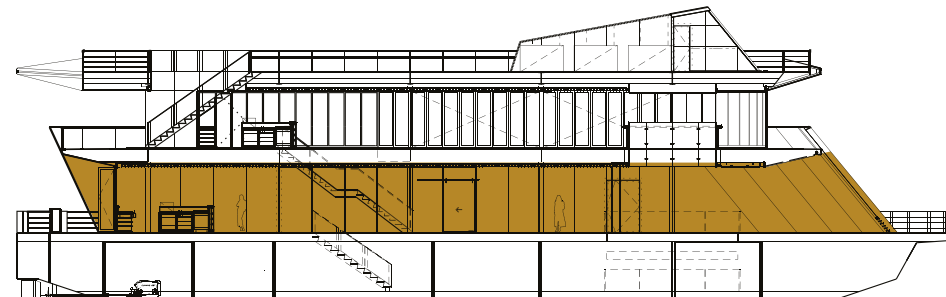
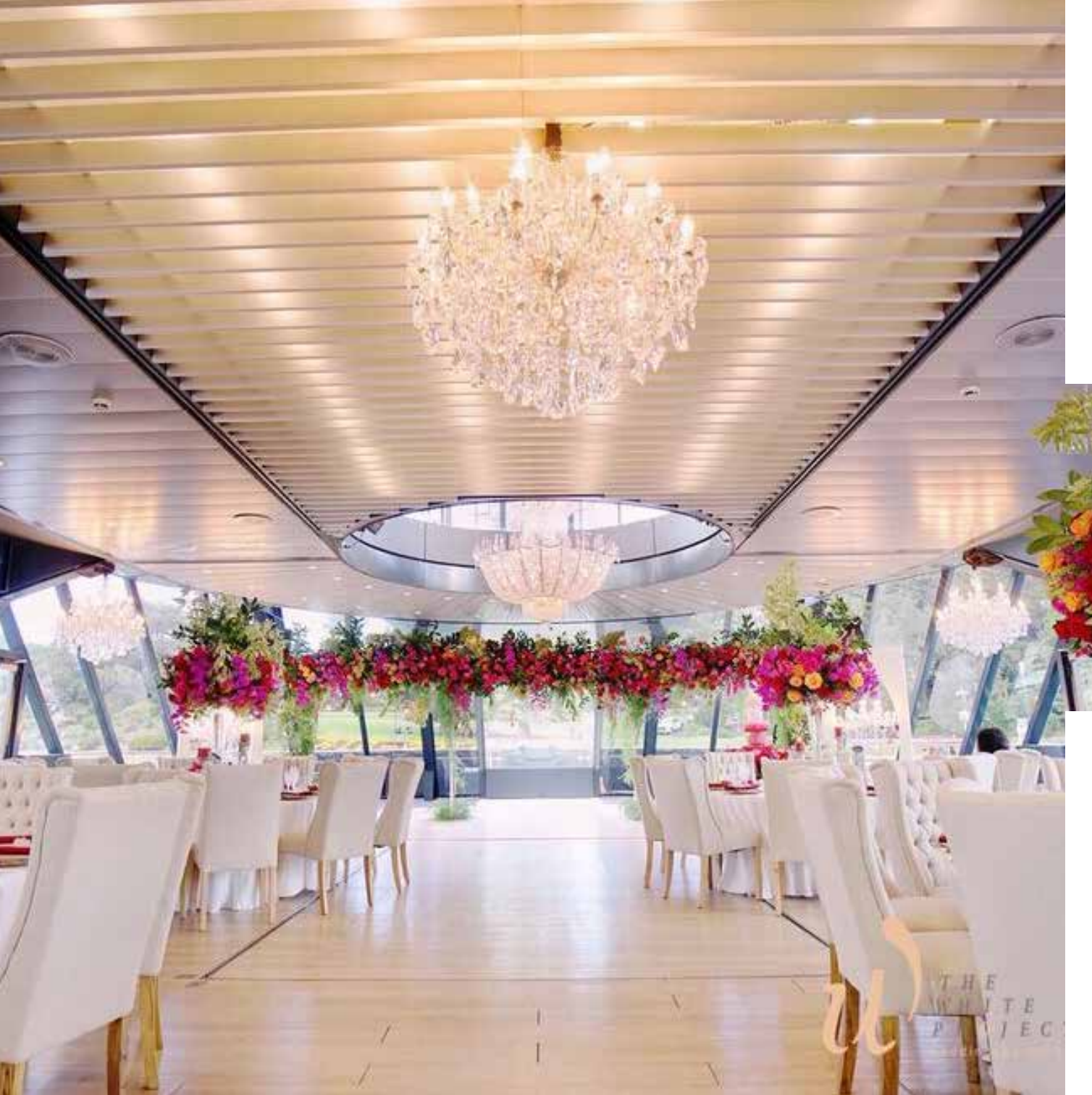
The large surround glass windows are tinted to reduce glare, and improve visual colours.

The ceiling & window height on this level is an impressive 3.5 metres and there is an amazing open glass void reaching through to the 2nd level above the dance floor.

Finishes are soft & understated. A modern ash wood floor sweeps through the dining area from bow to stern and allows for the perfect dance floor of any size; soft perimeter lighting adds to the ambience

The bar in the main dining area has minimal impact without bottles or glasses exposed to hinder the view. All items are concealed under benches and the bar is quietly lit.

Air conditioning and heating add to passenger comfort.



### MAIN DECK FEATURES

- Seating up to 350 (with dance floor)
- Seating 350 to 390 (without dance floor)
- Oval tables (10 to 12 guests)
- Cocktail party 950 guests (throughout)
- 3.5 metre ceiling height
- Ashwood dance floor through centre
- Surround glass

- 3 phase & 240 volt power
- 7 LED screens, USB inputs
- Sound system, microphone, DVD, iPod
- Integrated hydraulic lift 6 x 3m, 2500kg
- Full bar



## Starship Lounge

### YOUR HARBOUR JOURNEY ON BOARD STARSHIP SYDNEY WILL BEGIN IN THIS CHIC MODERN SPACE

With its imported Italian leather lounges, all weather surround deck area, soft lighting, and panoramic views, it sets the right mood for any event.

This dedicated, informal but elegant area is your introduction to Starship Sydney after boarding.

From the impressive initial impact of its exterior, we invite boarding guests to this sophisticated lounge level. The colour palette is clean, modern & nautical.

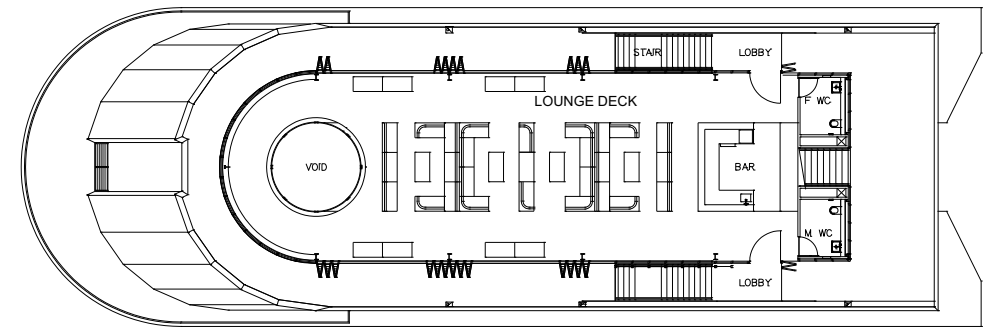
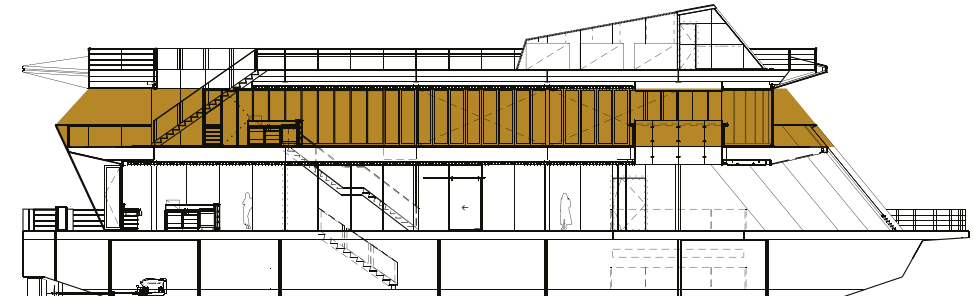
Soft perimeter lighting covers the area and a stream of soft lights shine above the rooms centre & from behind the bar.

Ceiling height here is also a luxury at nearly 3 metres.

Glass bi-fold doors open to the 2 metre wide covered deck and can be opened or closed depending on the weather.

Towards the front is the glass void and circular bar that allows viewing access to the main deck area below.

A wide, but subtle staircase is situated on either side for easy access to the dining area or a rear staircase which extends to the open sky deck.



### STARSHIP LOUNGE FEATURES

Dedicated lounge area

Alternatively, formal seated dining for 120

Glass bi-fold doors open onto surrounding outside deck

3 metre ceiling height

Microphone, LED screens and audio

3 phase and 240 volt power outlets

Outside smoking area

Glass viewing void / circular bar

Male and female toilets

Full bar

No pillars to obstruct movement or view

# Open Sky Deck

## PERFECT PANORAMIC VIEW OF SYDNEY HARBOUR.

Where better to see Sydney Harbour than from this open deck, with unobstructed panoramic elevated views in every direction.

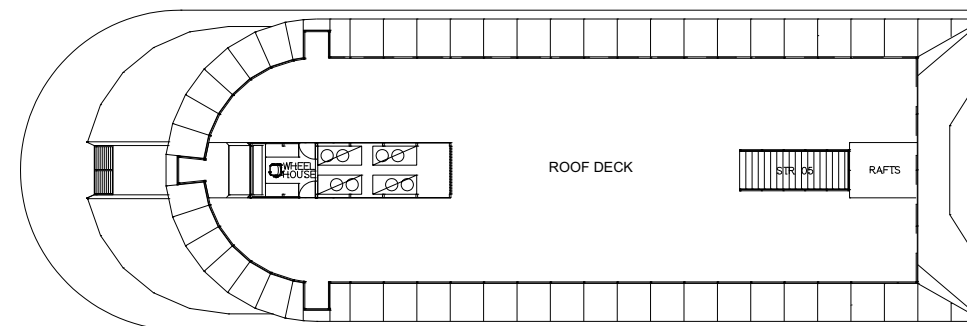
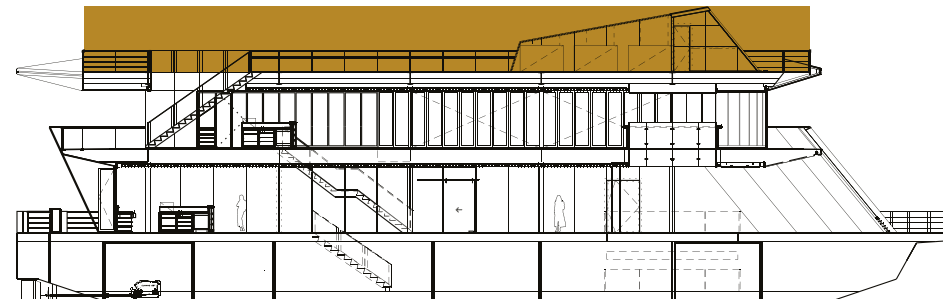
Rising 10 metres above the water level, Starship Sydney's Open Sky Deck offers a versatile entertainment space.

An expansive open area that can be modified to suit a number of purposes, including a spectacular wedding ceremony.

Chic cafe tables & chairs and cocktail bar tables with high stools add to the informal outdoor space.

An independent sound system allows the creation of an entirely different mood from the other levels allowing passengers an opportunity to relax and unwind.

The wide open staircase at the rear of the deck allows passengers to easily move back and forth between levels.



## STARSHIP SKY DECK FEATURES

Spectacular location for your Harbour Wedding  
Ceremony Cocktail tables and Occasional seating  
Marquees and other structures permitted

Subtle lighting  
Separate Bose sound system  
Microphone  
Smoking area



# Bathrooms and VIP Lounge / Green Room

**ULTIMATE LUXURY AND ATTENTION TO DETAIL ALLOWING  
YOUR GUESTS TO CRUISE THE HARBOUR IN COMFORT**

Starship Sydney has a number of bathroom facilities located on multiple decks. The main bathrooms are located below deck (accessed via the Main Dining Deck) with secondary facilities located on the Starship Lounge.

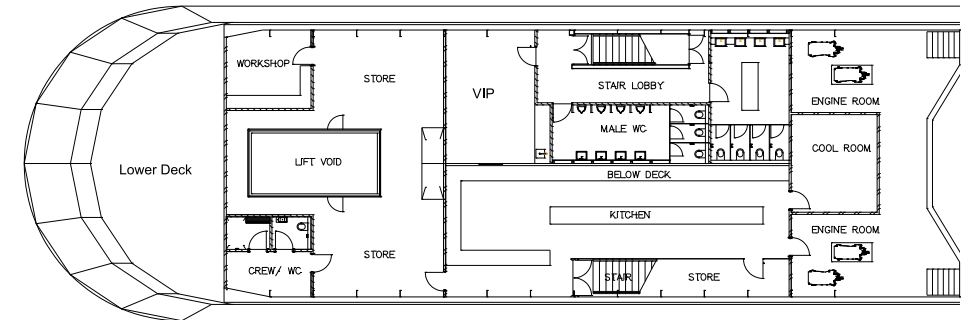
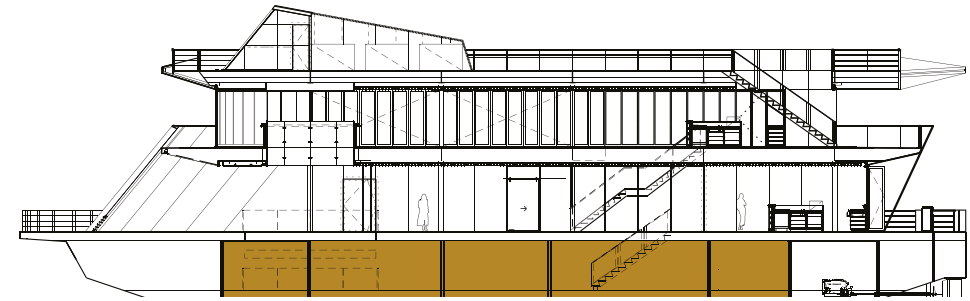
All bathroom facilities are modern, clean and spacious. They are stocked with quality hand wash products and have multiple Dyson Airblades.

Starship Sydney also has a private and spacious bridal suite Lounge or Green Room which features comfortable lounges and banquette seating, LED TVs and is lockable and completely secure.

The VIP or Green Room can also be attended by a personal attendant if required.

Access to main bathroom facilities and VIP room is via a wide staircase which can cater for those in a wheelchair or with limited mobility (must be organised with events manager prior to event).

**VIP ROOM: 30 SQ M (6 X 5 METRES)  
BATHROOMS: 15 FACILITIES**



## BATHROOMS FEATURES

- Multiple accessible mirrors
- Contemporary facilities
- Dyson Air Blades
- Corian bench tops
- Quality hand wash products

## VIP / GREEN ROOM FEATURES

- Lounges and banquette seating
- LED TVs
- Lockable
- Exclusive and private
- Personal VIP attendant
- Large full length mirrors



**FOOD &  
BEVERAGES**

## Formal 3 Course Menu

### ENTRÉE

*alternating choose 2*

Lemon thyme marinated Swiss brown mushrooms with cashew nut & potato cream puree, truss tomato confit, baby basil & pickled heirloom carrots (v, gf)

Butter nut pumpkin risotto with creamed potato puree, 24-month aged parmesan, chives, edible flowers, sea salt & cold pressed olive oil (v, gf)

Bannockburn free range poached chicken salad with petti leaves heirloom vegetables, lemon oregano vinaigrette & edible flowers (gf, df)

Huon salmon terrine with creamed lemon zested ricotta, truss tomato confit, fresh lemon, Yarra Valley caviar & shaved beetroot (gf)

Wagyu beef cheek ravioli in a light tomato sugo, crispy basil, truffle parmesan sable, cold pressed olive oil & soft herbs (gf)

### MAINS

*alternating choose 2*

Saffron cannelloni with pumpkin puree, creamed spinach, lemon zest ricotta, burnt butter sauce, roasted cashews, 24-month aged parmesan & crispy sage (v)

Huon Salmon fillet with roasted King Edward mushrooms, carrot & star anise butter puree, heirloom carrots, marinated fetta & winter peas (gf)

La Ionica twice cooked chicken breast with sautéed portobello mushrooms, clotted cream, mustard jus, shaved parmesan & soft herbs (gf)

Amelia Park 5-hour slow braised lamb shanks with truffle & chive potato puree, broad beans & black olive sticky jus (df)

Riverina premium sirloin with a twice cooked duck fat potato gratin, maple mustard & burnt hollandaise compound butter (gf)

### DESSERTS

*alternating choose 2*

Calibre dark chocolate bar with handmade edible soil, macerated raspberries & fresh honeycomb

Edible garden with creamed white calibre chocolate, passion fruit puree, selection of winter berries, edible flowers & blood orange sorbet

Passion fruit cheesecake with white chocolate cream, fresh raspberries, lemon curd, Valencia orange jelly & edible gold

Citrus tart with candied oranges, selection of fresh fruits, egg yolk vanilla bean ice cream, handmade soil & edible flowers

Tiramisu with vanilla bean mascarpone cream, coffee jelly, white chocolate caviar & pistachio biscotti

\* Menus subject to change



## Beverages

### STANDARD BEVERAGE PACKAGE

Angove Sauvignon Blanc Semillon & Shiraz Cabernet

Angove Chalk Hill Bubbles

James Boag's Draught

Toohey's Extra Dry

Hahn Super Dry

James Boag's Premium Light

Assorted soft drinks

Sparkling & still water

Freshly brewed tea and coffee

*Wine, Beer & Spirit Upgrades Available*

### SPIRITS

Vodka, Gin, Scotch, Bourbon, Whiskey  
and Rum

### BRINGING YOUR OWN

We allow 1 bottle per table and 2 varieties



# Optional Extras

The below menu items can be served as platters to the tables in addition to your chosen menu.

## ADDITIONAL MENU ITEMS

Platter of King Prawns

Platter of Oysters

Salt & Pepper Calamari

Antipasto platters

## DECORATIVE

Chair sashes

Topiary trees and hedges

Photo booths

Red carpet or White carpet

Lolly buffet

Bridal arch

Fairy lights

Wishing well

Stage





# Frequently Asked Questions

## CRUISING

### How long is the cruise?

Our wedding packages are five hours. However Starship Sydney can cruise for as long as you require. Additional time is calculated in hour increments and includes hire staffing and beverage costs.

### Where Does The Starship Cruise?

Starship Sydney will cruise throughout most of the Harbour from Homebush Bay to Watsons Bay taking in all the Harbour highlights. We are happy to take another route suggested by our clients.

### How stable is Starship Sydney?

Due to it's size and weight, Starship Sydney is very stable when cruising the Harbour. As with all vessels on the water it will move, but the motion is very soft and comfortable.

### What about guest's that may get seasickness?

If you have guests that are prone to motion sickness then they will need to take some-thing for the journey. It is very rare for guests to suffer from seasickness as the Harbour water is very calm and Starship Sydney is very stable.

### Where can our guests embark starship sydney?

Guests can board Starship Sydney from most wharf's in and around Sydney. The favored embarkation points are at King Street Wharf 4 in Darling Harbour, and Man-O-War Steps at the Opera House where plenty of parking is available for guests. All wharf bookings attract a \$90 booking fee per visit.

### Is there parking at the wharf?

Plenty of parking can be found around the King Street Wharf area [Star City, Darling Harbour] whilst the Opera House has it's own car park, entrance via Macquarie Street. Remember to check the time your car park closes.

### What time does Starship Sydney arrive at the wharf?

Starship Sydney will arrive at the wharf just before embarkation time.

Have your invitations request guest be at the wharf at least 20—30 minutes before your cruise begins.

### How long does Starship Sydney stay at the wharf?

Starship Sydney is allowed a 15 minute window at most wharf's so please ensure that all your guests are on time. If you need extra time then we suggest boarding at King Street Wharf 4 as we can stay here as long as necessary.

## WEDDINGS

### Can I get married on board?

Yes. Starship Sydney's viewing deck is the ideal location for a ceremony. We suggest that if you wish to be married on board then you board at the Opera House as you will have the magnificent backdrop of the Harbour Bridge, Opera House and City for your ceremony. We also suggest you pick a time just before sunset for you ceremony.

### Can I perform traditional ceremonies on board?

Yes. We can accommodate both religious & traditional requirements.

### Will someone help me organize my wedding?

Yes. We have professional wedding coordinators to assist in planning your event. They will discuss and provide you with an on board itinerary, room layout and decorative ideas.

### Who will put out my place cards and table gifts?

Your Starship Sydney wedding coordinator will organize this for you as well as get in touch with your suppliers [cake, flowers etc] to ensure deliveries know where to come on the day.

All we require from you is to provide a detailed guests list with seating arrangements and alphabetical list.

We will provide you with a template document to fill out.

**Who will be on board on the day to organize my reception?**

We have a great experienced team on board Starship Sydney who will ensure that your day runs smoothly. Your on board "Reception Manager" will be in charge and introduce him/herself to you, on or before the day and work with the MC to the planned itinerary.

**Is there a separate menu & price for children & professionals such as djs, photographers etc?**

Yes. Children under 10 usually require a simpler meal of chicken and chips which is provided at \$58.00 per child. Professional Meals are at \$68.00 each and teenagers are adult pricing less \$10.00.

**Do you cater for special diets?**

Yes we can accommodate the needs of your guests from vegetarian to vegans to allergies and religious requirements.

**Can I bring my own music/band/entertainment on board?**

Yes. Starship Sydney can accommodate most sized bands. If you need any suggestions regarding live music we can also assist.

Performers must be on time and load at our King Street Wharf 4 base.

Any entertainment booked through us—such as a DJ—will have their details passed on to you. You can then liaise directly with them prior to the day to organize your music selections and format.

If you wish to provide your own music CDs please ensure that they are not in an MP3 format. It is best check them on our system a couple of days before your event.

**Can I bring my own decorations and audio visual on board?**

Yes. We are happy for you to dress decorate & theme Starship Sydney as you please and bring your own audio visual equipment. If ladders and set up is required you must use a decorative company.

**Are any decorative/ party etc items not permitted?**

Items not permitted are confetti, live techno/stunt flames, indoor fireworks, flares, animals other than 'doves' for ceremonial purposes.

**Do you have wheel chair access?**

Yes you can board Starship Sydney in a wheelchair and we have a lift that is accessible upon request that allows you to access all levels of the vessel. Please speak with your Event Coordinator prior to your event date to have this organised.

**What if it rains? Is windy?**

Starship Sydney has full coverage on the main and lounge level so inclement weather will not disadvantage your event. Surround decks are also covered.

**Who will look after my guests during the cruise?**

We have a "Reception Manager" on board, who's primary responsibility is to ensure that the host and guests are happy, and being well looked after.

The wait staff ratio is approx 1:15 and both bars are operating during the evening.

The "Reception Manager" will work to your itinerary and accommodate any changes or special needs that you may have during the evening.

**What embarkation time should I put on the invitation?**

To avoid latecomers it is a good idea to allow for at least 20 minutes to 1/2 an hour on your invitation embarkation time. For example if your function begins at 6pm have a departure time of 5.45pm SHARP!

**What if guests want/need to disembark for any reason during the function?**

Water taxis have safe access to Starship Sydney and guests can disembark at any time during the cruise using this service.

There are a number of water taxi services on the Harbour and are on call. If you know in advance that you require a water taxi for a guests, please let us know as we will book in.

Water taxis can be paid for on the night by credit card, cash and cab charge.

Please see your cruise director/function host on the night if you need to book a taxi.





## MENUS & BEVERAGES

### Can I change the menu?

We are very flexible with our menus, so if you wish to make changes we are happy to assist. Changes to the menu may incur additional costs.

### Is there a minimum number of guests?

Yes. The minimum number of adult guests for our wedding packages begins at 140.

This is the minimum charge. You can have numbers less than the 140 but must still pay for the minimum charge.

### Can I bring my own caterers?

Outside caterers are welcome for events where specialty menus are required. However this is only offered at certain times of the year, with the caterer requiring a gold license.

Starship Sydney's in house chefs are excellent and have been providing excellent culinary delights to our corporate and social clients for many years.

External Caterers may affect quoted pricing.

### What about my beverages?

Starship Sydney have a number of different beverage packages to choose from and we are able to provide most requested beers, wines, cocktails etc.

As we are a licensed venue, we do not offer BYO.

On some occasions we do allow the bridal couple to provide some scotch or a special beverage at a corkage charge per bottle.

### Is the food prepared on board? Can I taste the food?

Yes. All menus are prepared and cooked on board in our commercial kitchen.

We organize a wedding taste test for the sit down menu.

These occur twice a year only.

We do not offer private tasting outside of these.

If you are unable to attend we recommend sending a family member in your place.

The taste test is complimentary for 2.

## INSPECTING STARSHIP SYDNEY FOR MY WEDDING

### When is the best time to inspect Starship Sydney?

Monday – Friday 9am – 5pm

Thursday Nights – by appointment

Saturdays – by appointment if you need to speak with a wedding co-ordinator

Saturday – casual viewing all day – no appointment necessary.

To arrange an inspection call or email our office to check available times.

Starship is located at King Street Wharf 4, Darling Harbour - parking can be found on Hickson Road (metered) or in the "Secure Parking" station on Sussex Street.

Inspections can take up to 1 hour as we allow plenty of time to answer questions and show you through the vessel. You can come alone or bring the whole family.

### What should I do if I want to book a date for my wedding?

If you are happy with Starship Sydney and wish to book, you can place a tentative hold on your preferred day.

A deposit to secure your booking is then due 2 weeks after the hold is placed. If a deposit is not received then the date is automatically released

### What happens after I book?

After you have confirmed your date with a deposit we will send through a confirmation and sample itinerary which will get you started in planning your event.

Menus can be confirmed after your taste test and final numbers are due 3 weeks prior to your reception

In the months prior to your reception we will assist you with all the planning, table settings, timings, decorations and suppliers to make your day perfect.

# STARSHIP SYDNEY AND STARSHIP AQUA

[www.starshipsydney.com.au](http://www.starshipsydney.com.au)

9279 3433

