



A FUSION OF LIGHT AND GLASS

Welcome Aboard Starship Sydney!

THE PHILOSOPHY OF STARSHIP SYDNEY WAS SIMPLE - TO BUILD THE MOST SOPHISTICATED GLASS VESSEL IN THE WORLD FOR THE BEST HARBOUR IN THE WORLD.

The undeniable appeal of Sydney Harbour is the perfect backdrop for corporate cruises, especially given that the scenery will change moment by moment or if you so choose, you can enjoy the uninterrupted dock side view of Darling Harbour.

You will appreciate the modern, luxurious and spacious entertaining areas as well as the state of the art facilities including intelligent audio-visual equipment and our unique hydraulic floor lift, perfect for 'reveals' and product launches.

There are no intrusive pillars to hinder line of sight and Starship Sydney features unobstructed harbour views with its three and a half metre high glass windows.

INSPECTIONS & PRICING

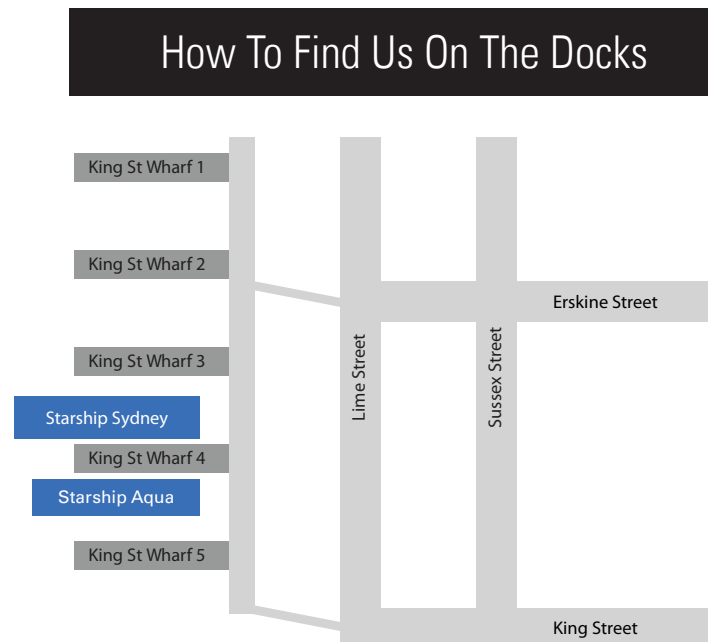
To book a guided inspection with our corporate events manager or to discuss your upcoming event please contact our office:

Monday - Friday: 9am - 5pm

Phone: 02 9279 3433

Email: enquiry@starshipsydney.com.au

King Street Wharf 4, Darling Harbour Sydney NSW





Overview of features

Spacious - Starship Sydney features three, spacious high ceilinged and expertly planned levels. Including features such as a columnless design and free flowing spaces.

Stable & quiet - The latest in nautical engineering used on Starship Sydney - providing unparalleled quiet cruising with remarkable stability.

Private VIP room - Ideal for a quiet and private retreat, the spacious room has lounges, flat screen and mini bar (also suitable as a green room).

Experienced staff - Our well trained professional team has been managing events on Sydney Harbour for over 30 years. We are experts in every aspect of every event.

Spectacular views - Enjoy 360 degree unobstructed views of the magnificent Sydney Harbour from all levels. All windows are UV glare resistance.

A/V Equipment - The vessel includes multiple flat screen plasma TVs and a wireless PA system. WiFi, projectors, advanced sound production and more available on request.

Air conditioned - Powerful, ducted air conditioning, whisper quiet outlets seamlessly and discreetly integrated into the architecturally designed ceiling, resulting in no visible obtrusions.

Complete privacy - During your event you will have complete and exclusive use of the vessel. Your privacy is guaranteed.

Hydraulic lift - Perfect for product launches and unveilings, the integrated floor hydraulic lift can be used for revealing products up to the size of a car or boat.

Streamlined design - Starship Sydney has been designed by the highly awarded architect William Smart of SD Studios with a high level of attention to detail.

Wheelchair and limited mobility friendly - Access to Starship Lounge, bathrooms, main dining deck. Special requirements apply, please discuss with event manager prior to event.

Multiple bars - Enjoy a beverage from one of the multiple bars spaced throughout the vessel.

Bathrooms - For your convenience bathroom facilities are located on 2 levels of the vessel with discreet access at the rear of the vessel.



Main Dining Deck

At 450 square metres Starship Sydney has the largest open plan deck space available on Sydney Harbour.

The large surround glass windows are tinted to reduce glare, and improve visual colours to an almost polarized effect.

The ceiling height and windows on this level is an impressive 3.5 metres and there is an amazing open glass void reaching through to the 2nd level above the dance floor.

Finishes are soft & understated. A 10 meter wide ash wood floor sweeps through the centre of the dining area from bow to stern, complimented either side with soft carpet and subtle perimeter lighting.

A section of this ashwood floor is an integrated car lift used to lower items such as cars or entertainers into or out of the hull. Used for surprise product reveals or as grand entrances for entertainers, this is a useful tool when planning events.

At the stern of the vessel we find glass bifold doors opening out onto a teak deck, and a view of the blue glow from the underwater feature lights.

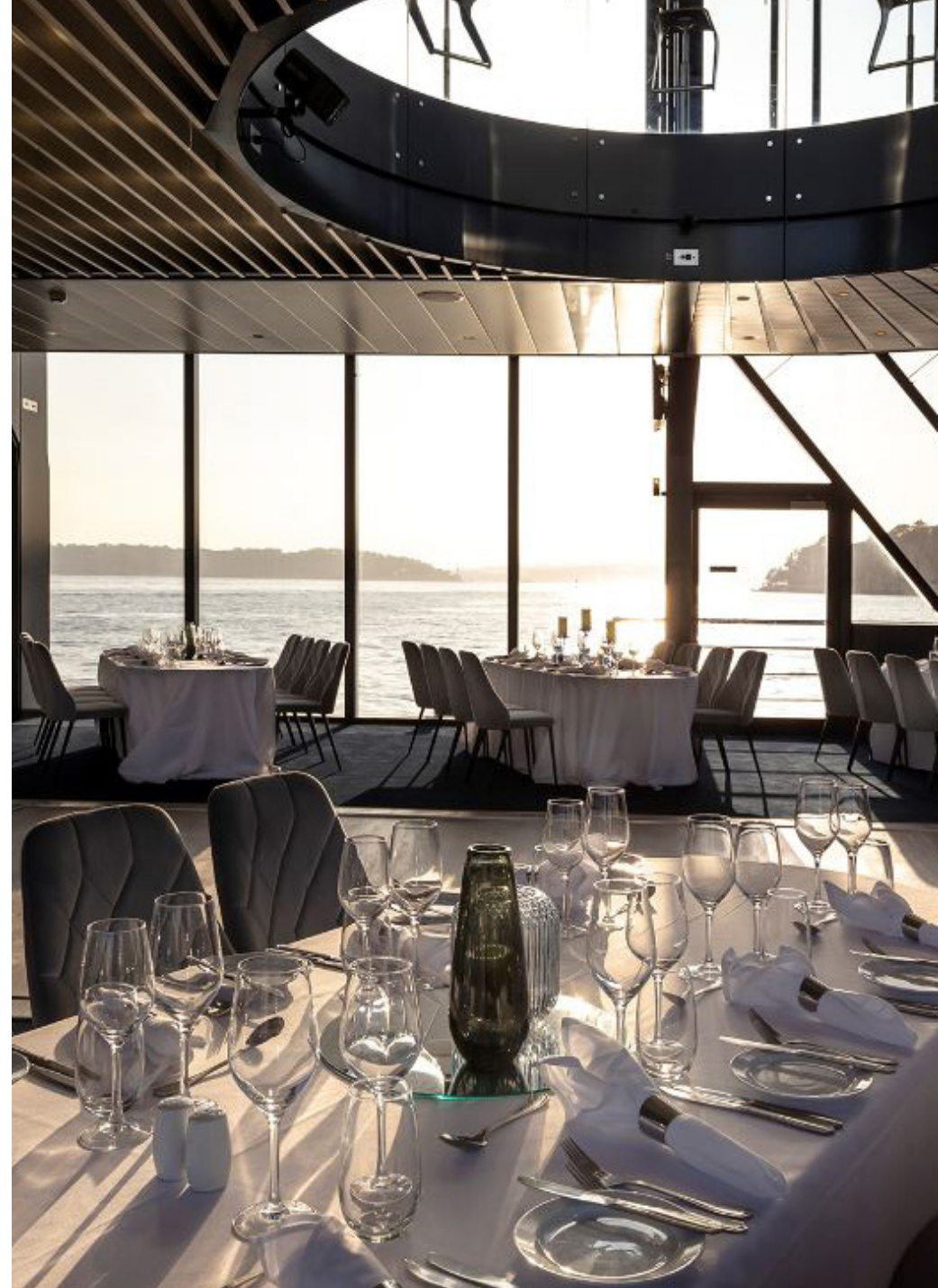
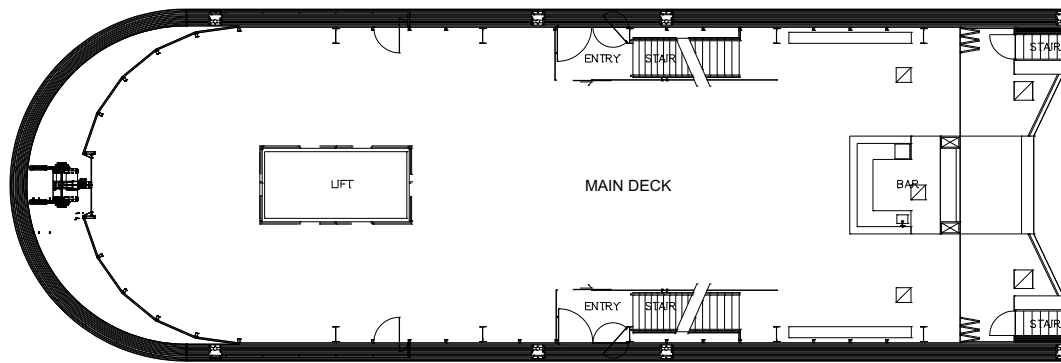
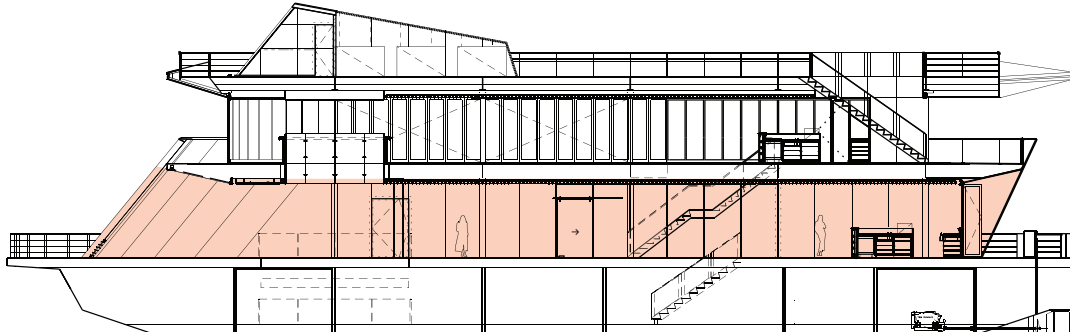
The bar in the main dining area has minimal impact without bottles or glasses exposed to hinder the view. All items are concealed under benches and the bar is back lit with soft lighting.

Air conditioning and heating add to passenger comfort.

Main Deck Features

- Seating up to 350 (with dance floor)
- Seating 350 to 390 (without dance floor)
- Oval tables (10 to 12 guests)
- Cocktail party 950 guests (throughout)
- 3.5 metre ceiling height
- Ashwood dance floor through centre
- Surround glass
- 3 phase & 240 volt power
- 6 plasma screens, USB inputs
- Sound system, microphone, DVD, iPod
- Integrated hydraulic lift 6 x 3m, 2500kg
- Full bar
- No pillars to obstruct movement or view

Main Dining Deck Measurements





Starship Lounge

Your Harbour journey on board Starship Sydney will begin in this chic modern space.

With its long low lounges, all weather surround deck area, soft lighting, and panoramic views it sets the right mood for any event.

This dedicated, informal but elegant meeting area is your introduction to Starship Sydney after boarding.

From the impressive initial impact of its exterior we invite boarding guests to this sophisticated lounge level. The colour palette is clean, modern & nautical.

Soft perimeter lighting covers the area and a stream of soft lights shine above the rooms centre & from behind the bar.

Ceiling height here is also a luxury at nearly 3 metres.

Glass bifold doors open to the 2 metre wide covered deck and can be opened or closed depending on the weather.

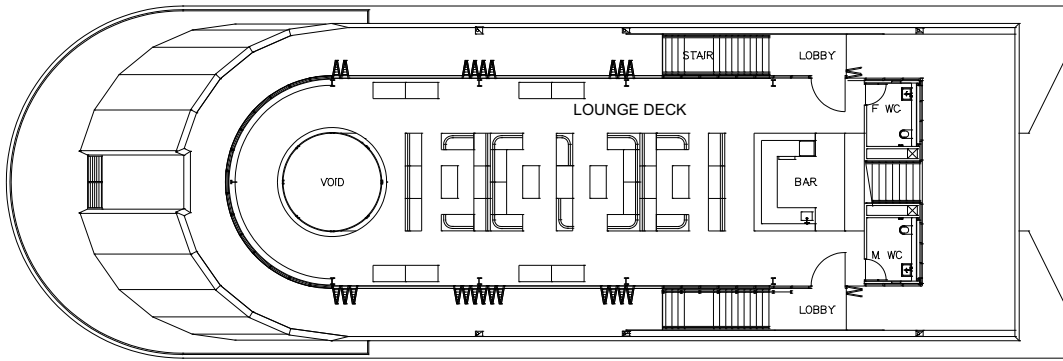
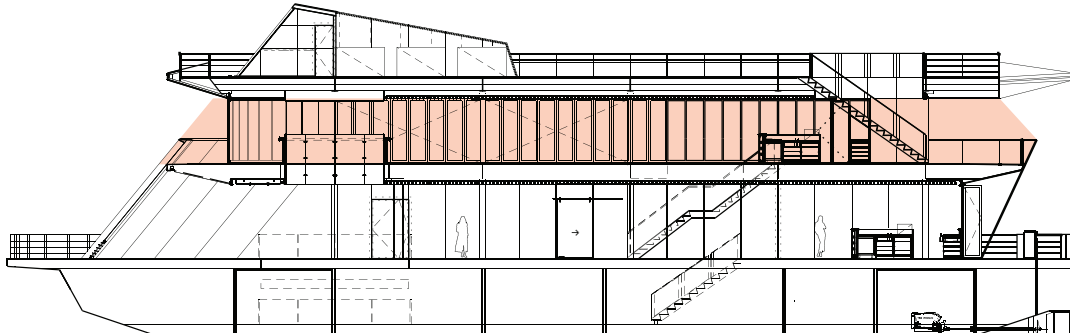
Towards the front is the glass void and circular bar that allows viewing access to the main deck area below.

A wide, but subtle staircase is situated on either side for easy access to the dining area or a rear staircase which extends to the open sky deck.

Lounge Deck Features

- Dedicated lounge area
- Alternatively, formal seated dining for 120
- Glass bifold doors open onto surrounding outside deck
- 3 metre ceiling height
- Microphone, plasma screen and audio
- 3 phase and 240 volt power outlets
- Outside smoking area
- Glass viewing void / circular bar
- Male and female toilets
- Full bar
- No pillars to obstruct movement or view

Starship Lounge Specifications





Open Sky Deck

Perfect panoramic view of Sydney Harbour.

Where better to see the Sydney Harbour than from this open deck, with unobstructed panoramic elevated views in every direction.

Rising 10 metres above the water level Starship Sydney's Open Sky Deck offers a versatile entertainment space.

An expansive open area that can be modified to suit a number of purposes.

Cafe tables & chairs, cocktail bar tables with high stools add to the informal outdoor space.

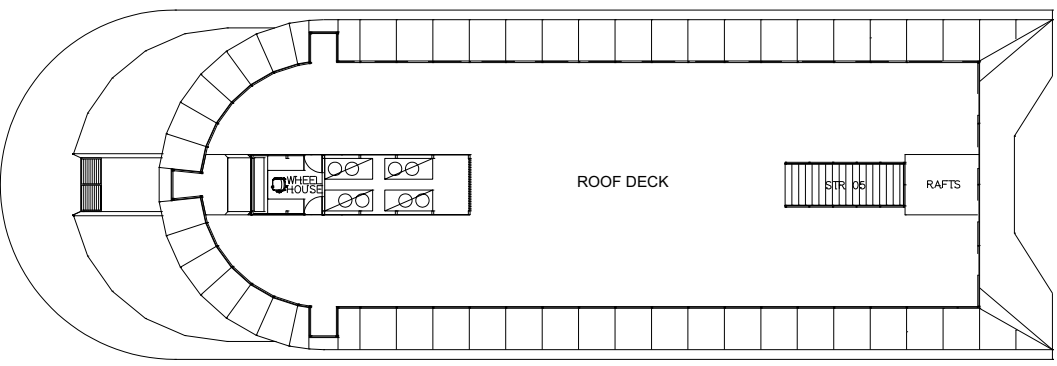
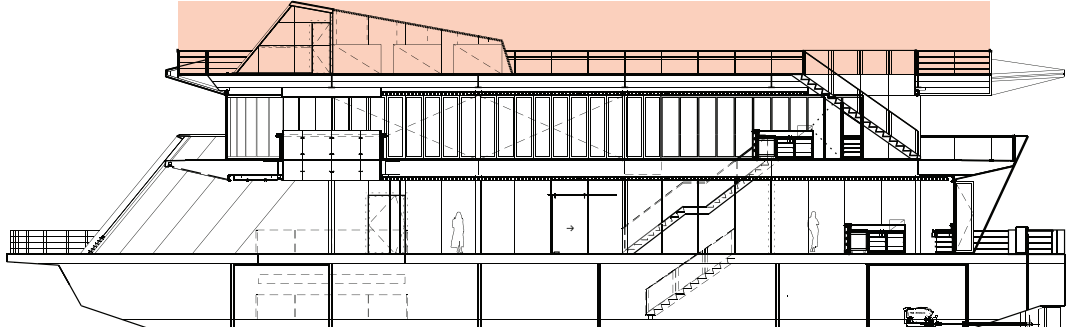
An independent sound system allows the creation of an entirely different mood from the other levels, allowing passengers an opportunity to relax and unwind.

The wide open staircase at the rear of the deck allows passengers to easily move back and forth between levels.

Bridge Deck Features

- Cocktail tables with bar stools, cafe tables & seating
- Bench seating
- Marquees and other structures permitted
- Subtle lighting
- Secondary dance area
- 240 volt power
- Separate sound system
- Microphone
- Smoking area
- Superior elevated viewing
- Open panorama

Open Sky Deck Specifications





Bathrooms and VIP Lounge / Green Room

Ultimate luxury and attention to detail allowing your guests to cruise the harbour in comfort.

Starship Sydney has a number of bathroom facilities located on multiple decks. The main bathrooms are located below deck (accessed via the Dining Room) with secondary facilities located on the Starship Lounge.

All bathroom facilities are modern, clean and spacious. They are stocked with quality handwash products and have multiple Dyson Airblades.

Starship Sydney also has a private and spacious VIP Lounge or Green Room which features comfortable lounges and banquette seating, plasma TVs and is lockable and completely secure. The VIP or Green Room can also be attended by a personal attendant if required.

Access to main bathroom facilities and VIP room is via a wide staircase which can cater for those in a wheelchair or with limited mobility (must be organised with events manager prior to event).

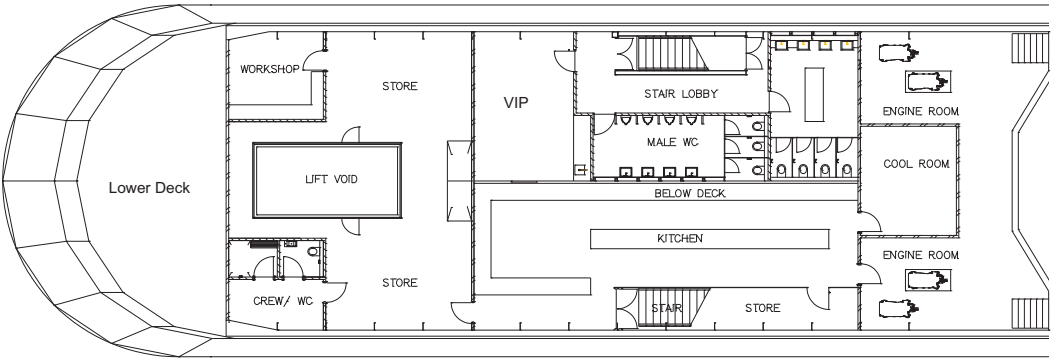
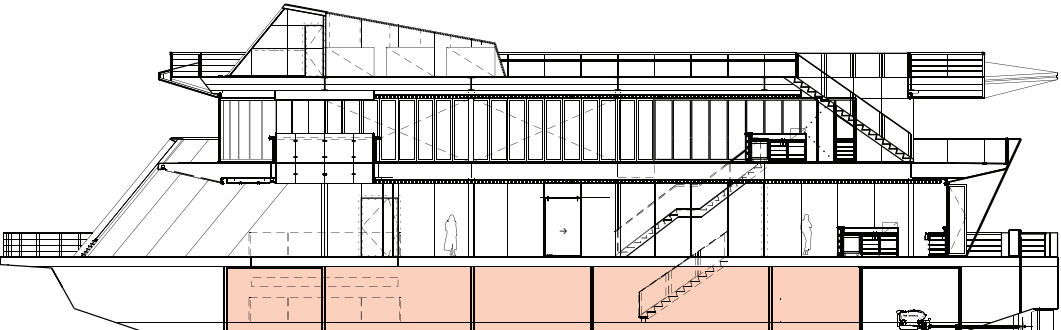
Bathroom Features

- Multiple accessible mirrors
- Contemporary facilities
- Dyson Air Blades
- Corian benchtops
- Quality handwash products

VIP/Green Room

- Lounges and banquette seating
- Plasma TVs
- Lockable
- Exclusive and private
- Personal VIP attendant
- Large full length mirrors

Bathroom and VIP Lounge Green Room Specifications



**STARSHIP
SYDNEY**