

What's on

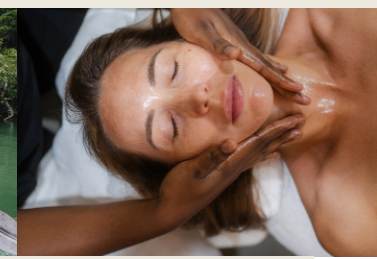
AT KINGFISHER BAY RESORT

BUSH TUCKER TALK & TASTE

ILLUMINA

CANOE PADDLE

ISLAND DAY SPA



MONDAY 25TH AUGUST

0730-1200 Whale Watching - Quick Cat II

0900-1700 Beauty Spots Guided 4WD Tour

1045-1130 Ranger-guided Bush Tucker Walk

1230-1300 Ranger Presentation -
Sharks & Rays

1600-1645 Bush Tucker Talk Taste

SUNSET 1733 Sundowner at the Sunset Bar

1830-1930 Ranger-guided Night Walk

1930-1955 Illumina Light Show

TUESDAY 26TH AUGUST

0730-1200 Whale Watching - Quick Cat II

0900-1700 Beauty Spots Guided 4WD Tour

1045-1145 Ranger-guided Great Sandy
Strait Walk

1445-1545 Ranger-guided Archery

SUNSET 1733 Sundowner at the Sunset Bar

1930-1955 Illumina Light Show

WEDNESDAY 27TH AUGUST

0730-1200 Whale Watching - Quick Cat II

0900-1700 Beauty Spots Guided 4WD Tour

1045-1130 Ranger-guided Bush Tucker Walk

1445-1530 Ranger-guided Eco Walk

1600-1645 Bush Tucker Talk Taste

SUNSET 1734 Sundowner at the Sunset Bar

1830-1930 Ranger-guided Night Walk

1930-1955 Illumina Light Show

THURSDAY 28TH AUGUST

0730-1200 Whale Watching - Quick Cat II

0900-1700 Beauty Spots Guided 4WD Tour

1015-1100 Ranger-guided Wallum Walk

1045-1145 Ranger-guided Great Sandy
Strait Walk

SUNSET 1734 Sundowner at the Sunset Bar

1930-1955 Illumina Light Show

FRIDAY 29TH AUGUST

0730-1200 Whale Watching - Quick Cat II

0900-1700 Beauty Spots Guided 4WD Tour

1045-1130 Ranger-guided Bush Tucker Walk

1445-1530 Ranger-guided Eco Walk

1600-1645 Bush Tucker Talk Taste

SUNSET 1734 Sundowner at the Sunset Bar

1830-1930 Ranger-guided Night Walk

1930-1955 Illumina Light Show

SATURDAY 30TH AUGUST

0730-1200 Whale Watching - Quick Cat II

0900-1700 Beauty Spots Guided 4WD Tour

1045-1130 Ranger-guided Wallum Walk

1300-1400 Ranger-guided Canoe Paddle

1445-1545 Ranger-guided Great Sandy
Strait Walk

1800-2030 Junior Eco Rangers -
Night Walk Adventure

SUNSET 1735 Sundowner at the Sunset Bar

1930-1955 Illumina Light Show

SUNDAY 31ST AUGUST

0730-1200 Whale Watching - Quick Cat II

0900-1700 Beauty Spots Guided 4WD Tour

1045-1130 Ranger-guided Bush Tucker Walk

1230-1300 Ranger Presentation -
Mammals of K'gari

1400-1500 Ranger-guided Canoe Paddle

1445-1530 Ranger-guided Eco Walk

SUNSET 1735 Sundowner at the Sunset Bar

1930-1955 Illumina Light Show

MUST-DO EXPERIENCE



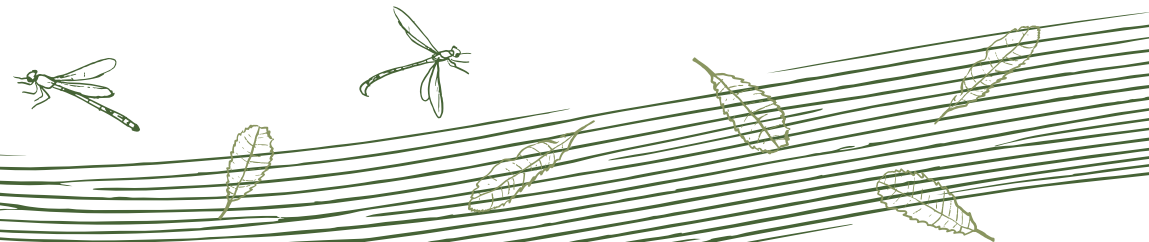
WHALE WATCHING

Witness the larger-than-life humpback whales closer than ever before, as they breach and play in the calm waters along K'gari's remote western coast, for a truly unforgettable wildlife encounter.

Kingfisher
BAY
RESORT



DOWNLOAD OUR APP
FOR MORE INFORMATION
AND TO BOOK





BEAUTY SPOTS TOUR

Join our expert guides, head offroad in our air conditioned 4WD coach and discover K'gari's bucket list locations, such as Lake McKenzie, Pile Valley rainforest, Eli Creek and more, with lunch included!

Pre-book at Reception & meet at the Sunset Bar at 0900 for a 0905 - 0915 departure. **To bring:** swimmers, refillable water bottle, resort towel + slip on shoes.

Adult \$278 / Child \$188

Please note we do not carry children under the age of 1 on this tour.



SUNDOWNERS IN PARADISE

Head down to the Sunset Bar for an icy cold drink and watch a magical sunset over the Great Sandy Strait.

Select from a cheese (\$30), prawn (\$30) or Trio of Dips (\$20) platter and bask in that golden glow! **Pre-order at Reception prior to 2pm.**

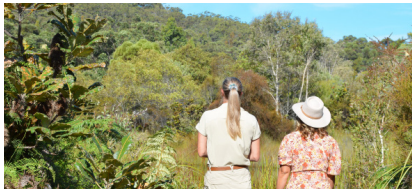


ILLUMINA LIGHT SHOW

Experience K'gari after dark and visualise the brilliance of the world's largest sand island, with Queensland's first permanent light show! Meet at Reception.

Adult \$50/Children Free

Duration - 23 mins



RANGER-GUIDED EXPERIENCES

Join our Rangers for a series of immersive activities, picturesque nature walks or informative eco talks & presentations (free of charge), as you discover just how remarkable this World Heritage-listed destination really is. **Some charges apply - Book at Reception.**

Guided Walk Meeting Locations:

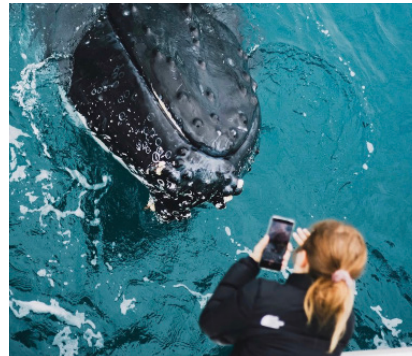
Great Sandy Strait + Beach & Mangrove Walks - Meet at Sunset Bar

All other Walks - Meet at Reception



ISLAND DAY SPA

Revel in a rejuvenating facial, relaxation massage or nourishing skin treatment using all-Australian products for the perfect holiday indulgence. Treat yourself, or enjoy as a couple, with Spa Specials available! **Book at Reception.**



WHALE WATCHING

Step aboard the Quick Cat II for a ½ day cruise along the Great Sandy Strait, in the whale watching capital of the world! Marvel as the humpbacks play and make a breathtaking splash right before your eyes, with close encounters guaranteed! Tea, coffee + light refreshments included.

Adult \$155 / Child \$99 (4-14)

Departs 7:30am from the end of the Kingfisher Bay jetty (returning 12:00pm). **Optional:** Whale swims - additional \$100* (At discretion of crew + dependent on weather).

CANOE PADDLE

Enjoy a paddle up to Dundonga Creek, weaving through the pristine mangrove habitat. Book at reception and meet at the Sunset Bar 10min prior.

Adult \$35 / Child \$25. (Moderate fitness required) Children must be accompanied by an adult.



BUSH TUCKER TALK & TASTE

Sample a selection of native bush cuisine, presented by a Resort Ranger and our Executive Chef. Book at reception prior to 2:30pm. Meet in The Maheno Lounge Bar from 3:45pm to order your complimentary beverage (beer, wine or soft drink).

\$50pp - Please advise dietary requirements.



JUNIOR ECO RANGERS

Just for the kids! (Aged 5-12 years). Book at Reception by 0900 for the AM session, and by 1700 for the PM session (Minimum of 3 to run). BYO: torch (not essential) and water bottle.

\$55 per child - Lunch/dinner included.

Please advise dietary requirements at time of booking.

RESTAURANTS

Sand & Wood: Open daily, dine in and take-away.

Breakfast 0630-1000 / Lunch & Dinner 1100-2100 (Reservations required from 1730).

Dune Restaurant: Open daily for Dinner from 5:30pm - 9:00pm

GENERAL INFORMATION

Island Day Spa: Our specially-designed sanctuary offers an array of nourishing treatments and soothing rituals for you to rest, reflect and relax. Open 08:00 - 16:30 daily - bookings are essential, contact Reception to confirm availability.

Library Corner: A cozy retreat for book lovers of all ages or a welcoming space to play some board games, the Library Corner offers a haven of inspiration and discovery. Located at Norfolk loft Centre complex.

Ferry Transfer Schedule: (45 min to River Heads) Departs: 0800, 1015, 1430, 1700

Kingfisher Shuttle Services: Shuttle services operate between Reception and The Sand Bar. Additional service for Villa/House guests. Timetables are located on a signpost in the driveway outside Reception.

Wi-Fi: Simply connect to the Wi-Fi Network, 'GuestNet'. This service is available in hotel rooms and throughout the Centre Complex.

OPENING HOURS

DAY SPA

📞 Ext 3329: see reception for bookings

RANGERS' DESK

📞 Ext 3353: 1000-1630

THE SUNSET BAR

📞 Ext 7357: 1000 until sunset

THE VILLAGE STORE

📞 Ext 7362: 0700-1730

COMPLEX SWIMMING POOL: 0600-2200